

## Great Savings

### Homeowners

You can rest assured that when you install wood posts with the Titan Post Anchor™ you won't be replacing them 5 or 10 years from now.

**Do it once! Do it right!**

### Builders

Save big on reduced labor with no more shimming, leveling and notching posts and deck boards.

Offer your customers  
a long term solution  
that meets their  
aesthetic expectations.



### Adaptable to Other Railing Systems

The Titan Post Anchor™ can be used  
in diverse situations.

### Here Is Just A Short List Of Possible Uses:

- With any custom wood railings
- With many composite railings
- With aluminum railing sections
- With glass panel railing sections
- With various railing stiles and balusters
- As covered newel posts for stairs
- As sign posts
- As small fence sections
- On concrete, wood, fiberglass or vinyl surfaces

## Size and Species of Wood

The standard Titan Post Anchor™ is designed to work with wood posts ranging from 3.5" x 3.5" to 4" x 4".

It also works best with soft woods like cedar, redwood and pressure treated pine.

Exotic hardwoods and fir are more difficult materials to work with so require special installation instructions which are included with each purchase.

## Ordering Your Post Anchors Is Easy

The ordering process is so simple. Just call us at 866-577-8868 or go online to [www.ideasfordeckdesigns.com/titanpostanchor.html](http://www.ideasfordeckdesigns.com/titanpostanchor.html) to learn more and see videos.

If you are ready to order right now go directly to our order page at [www.ideasfordeckdesigns.com/order.html](http://www.ideasfordeckdesigns.com/order.html). All shipments are handled expeditiously and shipped exclusively through FedEx.

Go ahead. You deserve the best!  
Make your deck special and your investment last longer and longer with the Titan Post Anchor™.

### Titan Post Anchor Systems™

A Division of 2049905 Ontario Inc.

[www.ideasfordeckdesigns.com](http://www.ideasfordeckdesigns.com)

[www.titanpostanchor.com](http://www.titanpostanchor.com)

509 Kochar Drive, Ottawa, Ontario, K2C 4G9 Canada  
phone 613-224-9477 fax 613-224-9713  
toll free 866-577-8868

© Copyright 2007 Titan Post Anchor Systems TM  
A division of 2049905 Ontario Inc. All rights reserved.  
Patents pending.

The most advanced  
wood post  
anchor system

available...Anywhere

**TITAN**  
Wood Post Anchor™

Titan Post Anchor Systems™

[www.ideasfordeckdesigns.com](http://www.ideasfordeckdesigns.com)  
[www.titanpostanchor.com](http://www.titanpostanchor.com)

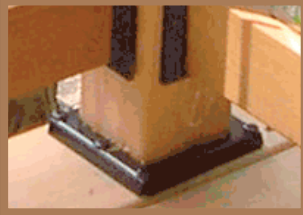
The most advanced wood post anchor system available...  
Anywhere.

US and Foreign patents pending



The Titan Post Anchor™ is a wood post anchoring device that blends form and function in a way never before conceived.

Attaching wood posts to any horizontal surface for railings or as stand alone components for signs, gates, small fences and more is now quick and easy and best of all – lasts a lifetime.



## Form

The patent pending tube technology of the anchor approaches the age old problem of attaching surface mounted posts to decks from a completely different perspective.

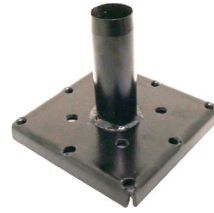
The sharp tube pierces into the solid wood core of the post and is hidden internally to create a post to deck connection that is clean and inconspicuous – even to the most discerning homeowners.

## Function

The tube is mechanically fitted into the base and welded for an extremely stiff connection. Once the tube penetrates the post it can't be easily levered off the base like standard screws and a flat plate. The post remains high and dry making it maintenance and rot free for a lifetime.

## Steel

The Titan is made from heavy gauge formed galvanized steel and welded for maximum durability. The powder coat finish gives it a clean durable finish to withstand the elements.



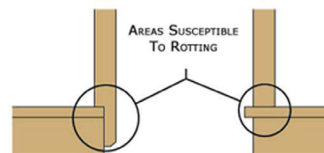
## Strength

The Titan Post Anchor has performed very well under lab destruction tests. A single unsupported cedar post withstood a concentrated point load of 250 lbs at 36" and 214 lbs at 42" high. When built into a railing system with other posts and directional changes, the horizontal load sustained by the railing is increased even further. See the lab test results at [www.ideas-for-deck-designs.com/tabtests](http://www.ideas-for-deck-designs.com/tabtests)



## Longevity

Rot starts where water regularly pools and collects. The Titan Post Anchor™ lifts the post up off the deck. It stays dry so your posts won't rot. Traditional construction methods leave wood posts vulnerable to moisture – and rot.



## Quicker Installation

- 1 Cut the post.
- 2 Drill a guide hole with a hole saw.
- 3 Drive the anchor into the post
- and
- 4 Finish with 4 lag bolts.

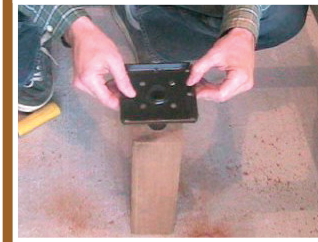


## Easy as

1



2



3



4



It takes minutes to install

