



Symmetry Railing

Strong is stylish

Fiberon® Symmetry™ Railing is the ideal balance of looks and strength. The soft satin finish is elegant yet durable, while the sculpted top rail adds classic appeal to any space. Longer line sections are available to reduce the number of needed rail posts and enable a more uninterrupted view of your surroundings. Three outstanding colors ensure plenty of customization options. And with its clever sub-rail reinforcement and innovative, low-maintenance composite construction, Symmetry Railing will remain strong, sturdy, and beautiful for years to come.

An exceptional rail for your exceptional space

- Soft satin finish looks like painted wood, performs like a hard-wearing composite
- Reinforced top rail provides strong, sturdy feel
- Available line and stair sections (from 6-12 ft.) improve sight lines, reduce installation time
- Popular color options (Tranquil White, Serene Black and Simply Brown) coordinate easily with any home or deck
- Matching beveled balusters feature same soft satin finish
- Compatible with Fiberon ClearVisionSystem®, for the ultimate in unobstructed views

Designer colors



Tranquil White

Serene Black

Simply Brown

Actual products may vary from colors shown.

Elegant profiles



Top

Bottom

Post Sleeves: 5 in. x 5 in. x 39 in. and 5 in. x 5 in. x 108 in.

Post Cap and Base Moulding: 5 in. x 5 in.

Beveled Composite Balusters: 29.5 in. (for 36 in. heights) and 35.5 in. (for 42 in. heights)

Fiberon ClearVisionSystem: 36 in. rail heights. 28.5 in. x 65 in. x 6 ft. clear acrylic panels; white or black channels. Install only on decks no higher than 30 in. from the ground.



Designed and engineered to be compliant with the ICC-ES AC174, Acceptance Criteria for Deck Board, Span Ratings and Guardrail Systems (Guards and Handrails).

For the most up-to-date information and specifications, visit fiberondecking.com or call 800.573.8841.

Tranquil White



Simply Brown

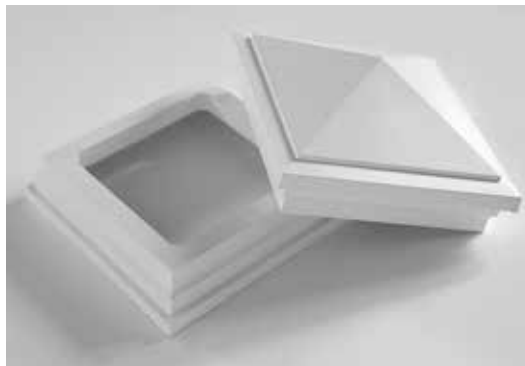
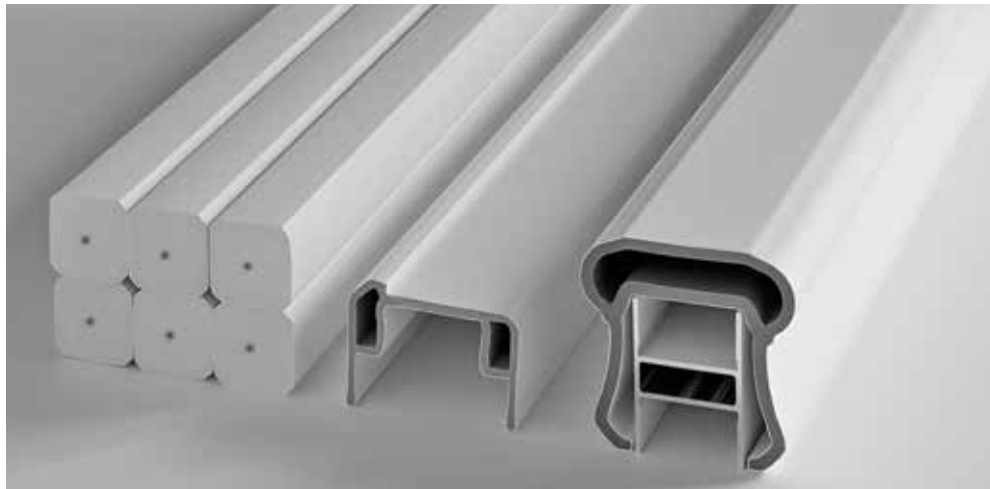


Serene Black



Improved design for faster, easier installations

- Aluminum sub-rail adds strength and stability, allowing for longer rail spans and fewer required rail posts
- Center-punched balusters enable easier screw alignment
- Side installation method for balusters saves time
- Pre-drilled rails ensure code-compliant baluster spacing
- Bottom rail and top sub-rail (H-channel) include pre-drilled holes for angled installations
- Pre-cut stair mounting brackets work with 27°- 38° stair angles
- Kits available in 6 ft., 8 ft., 10 ft., and 12 ft. lengths for both line and stair applications
- Brackets for both line and stair applications are included in each kit, eliminating the need to order these separately



For the most up-to-date information and specifications, visit fiberondecking.com or call 800.573.8841.